

About Us.

The Boston Mountain Solid Waste District

provides environmentally sound and economically feasible solid waste management solutions for the citizens of Washington and Madison counties. Using an integrated approach of waste reduction, reuse, recycling, composting, disposal and education, the district works to keep the Ozarks beautiful and pristine for generations to come.

#disposewisely

BOSTON MOUNTAIN SOLID WASTE DISTRICT

11398 Bond Rd. Prairie Grove, AR

Phone:

479 846 3005 // 888 426 9228

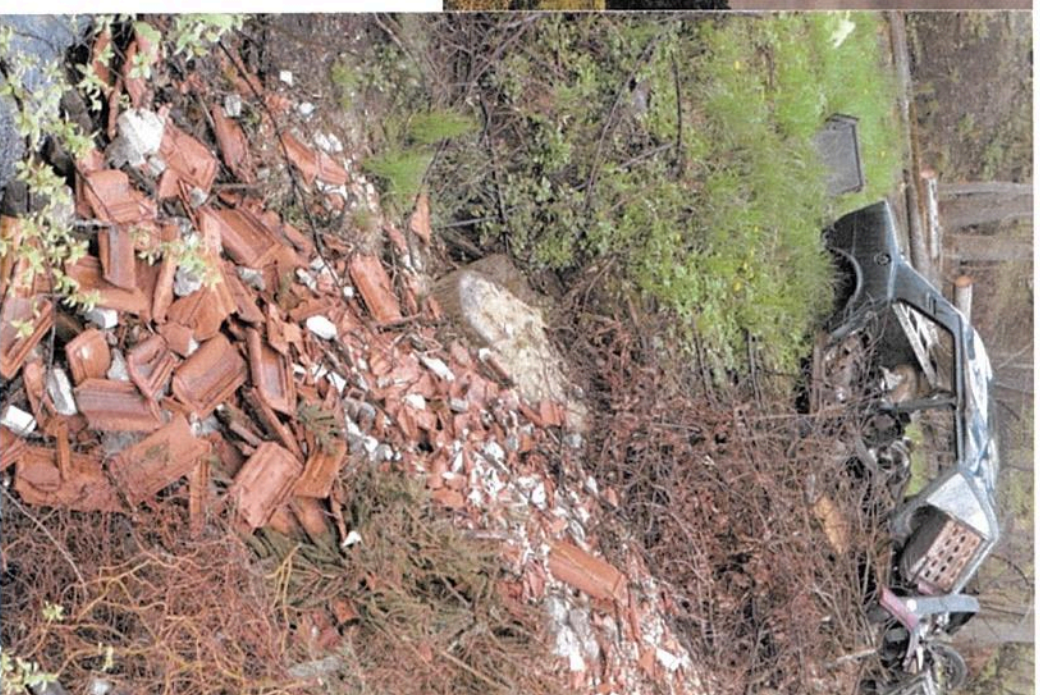
E-Mail:

recycle@bmswd.com



Boston Mountain
SOLID WASTE DISTRICT

bostonmountain.org



WITH ILLEGAL DUMPING
& TRASH BURNING



Boston Mountain
SOLID WASTE DISTRICT



You burn. We all get burned.

There was a time when the open burning of trash in a backyard barrel was no big deal. But today's trash is full of chlorine-containing plastics, such as plastic wraps used in the packaging of many quick-served meals, snacks, fresh meats and more.

When burned, these products release dioxins, an extremely dangerous toxin that's harmful at even low levels. Dioxins released into the air can travel far distances before settling on plants and soil and in our streams and rivers. Fish and animals, such as grazing cattle, then consume dioxins and pass them to us.

Dioxins can be inhaled when we breathe and ingested when we eat contaminated meat and fresh vegetables from our gardens.

You dump. We all get dumped on.

Besides being unsightly, illegal dumping in the form of household garbage, discarded appliances, used tires and more pose similar health risks to open burning. Chemicals found in everyday packaging leech into the soil, our streams, wells and groundwater.

Dumps attract mosquitoes, flies and rodents, all of which carry diseases. Illegal dumps are a public nuisance and an eyesore, leading to depressed property values for surrounding landowners. Wildlife habitats are damaged and it lowers the quality of life for all of us who call this area home.

There is also an economical deterrent to dumping: Every time a person dumps illegally, it costs the city or county money for cleanup and proper disposal.

It all adds up.

While one family openly burning trash may not seem that harmful, the cumulative effect is. Backyard trash burning is the single largest producer of dioxin emissions in the country. Illegal dumps tend to attract more dumping by others, thus compounding the health risks. The risk for cancer is raised, as well as complications with asthma, emphysema, bronchitis and skin rashes. Children are especially at risk, as they eat and drink proportionately more than adults and are outside more, which creates more opportunities to be exposed to harmful toxins.

How can you help?

It starts with modifying our own behavior, along with those around us.

- **Report:** Open burning and illegal dumping are both against the law. Report violators to local authorities.
- **Reduce:** When possible, buy in bulk and avoid products with excessive packaging.
- **Reuse:** Sell or donate items you no longer need or want. Consider purchasing used items if they meet your needs.
- **Recycle:** Most local recycling centers accept aluminum cans, glass, paper, steel, cardboard, newspapers and plastic.



- **Compost:** Combine kitchen scraps, leaves and other yard waste to make a rich soil.
- **Educate:** Each year American households purchase almost 2 billion pounds of hazardous waste in the form of household cleaners and chemicals. We use nearly 1.3 billion gallons of motor oil, but recyclers reprocess less than half. Be smart with how you dispose of everyday items such as batteries, paints, solvents and cleaners.
- **Dispose:** The Boston Mountain Solid Waste District can help you find waste haulers that service your area. We also offer bulk pickup of large items such as furniture and appliances. See our web site or call the number on the back of this piece to learn more.

